

MESSRS :

PRODUCT DRAWING

CUSTOMER'S PRODUCT NAME:

TDK PRODUCT NAME: DC-AC INVERTER UNIT
CXA-0315

TDK-Lambda

TDK Corporation

Corporate Headquarters
13-1,Nihonbashi 1-chome,Chuo-ku,
Tokyo 103,JAPAN
Telephone : 03-3278-5111

PREPARED BY	APPROVED BY	AUTHORIZED BY
<i>Nov. 17 , 2006 Y.Kaneto</i>	<i>Nov. 17 , 2006 S.Tsujimura</i>	<i>Nov. 17 , 2006 N.Kitajima</i>

DWG.No.	CTR-0924-F
---------	------------

Precautionary Notes Regarding the Use of This Inverter

When using this product, give due consideration to the precautionary notes described below and ensure a safe design. Inappropriate use may result in electric shock, injury or fire.

Warning



- This product is subject to high voltage. Do not touch it while the power is on. Failing to do so may result in electric shock.

Caution

- This product is designed for the lighting of a Cold Cathode Fluorescent Lamp. Do not use it with any other load.
- Store this product under the conditions defined in the specification document.
- Do not store this product in an environment where dust, dirt or corrosive gas (salt, acid, base, etc.) is present.
- This product is subject to high voltage. If there is a possibility that the user may touch the product, provide a proper indication in order to draw the user's attention.
- This product is designed for use with general electronic equipment. If it is to be used with medical equipment that directly affects human life or for the control of transportation equipment to which passengers entrust their lives, provide thorough fail-safe measures.
- Avoid using this product under high temperatures or high humidity or in an environment in which dust, dirt or any corrosive gas (salt, acid, base, etc.) is present. Also, be careful not to allow the formation of dew condensation. It may result in damage or electric shock.
- If the product does not have a built-in protective circuit (circuit breaker, fuse, etc.), it is recommended that a fuse be used at the input stage to prevent the generation of smoke or fire in the event of a malfunction. Even when the product has a built-in protective circuit (circuit breaker, fuse, etc.), the circuit may not function properly due to inappropriate operating conditions or power-supply capacity. It is recommended that an appropriate protective circuit (circuit breaker, fuse, etc.) be provided separately from the built-in circuit.
- Use the product only within the specified input voltage, output power, output voltage and operating temperature ranges. Exceeding these values may result in damage, etc.
- Provide a measure for the prevention of surge voltage due to lightning, etc. Abnormal voltage may result in damage, etc.
- To prevent problems arising from short-circuiting of the high-voltage section, provide appropriate measures to prevent the entry of foreign substances following installation.
- This product is not designed to provide resistance to radiation.
- Ripples could be superimposed on the voltage and the current in the input source connected to the inverter, depending on the impedance in the input source, wiring, etc. When you select an input source, please check waveforms, etc on the final set.

Handling Precautions

- This product uses thin wires. Observe the following precautions and handle it with care so as not to cause wire breakage. Broken wire may result in damage, etc.
 - ❖ Do not stack multiple products on top of one another.
 - ❖ Do not allow the product to come in contact with tools, etc.
- Do not apply excessive stress during installation. It may cause chipping and cracking, resulting in damage, etc.
- Provide clearance between the high-voltage section of this product and the frame body on which the product is installed and also the conductor section as per listed on page 2, [1] "Outline".
- Please do not use the product, when dropping it, since there is a possibility of the parts damage. Please confirm abnormality is not found in the product enough when using it by any chance.

	No.	MATERIALS NAME	QU	MATERIAL	REMARK
	PRODUCT NAME or MODEL, TITLE				
	DC-AC INVERTER CXA-0315				
TDK CORPORATION	NAME OF DRAWING		DRAWING No.		PAGE
	PRODUCT DRAWING		CTR-0924-F		1 / 8

1. Part Name

The part name is CXA-0315

2. Contents

Item	Section	Page
1.Outline		
1-1.Outline	See Section [1]	3
1-2.Connector configuration	See Section [1]	4
2.Equivalent Characteristics		
Absolute Maximum Ratings	See Section [2]	5
3.Test Circuit	See Section [3]	6
4.Electrical specifications	See Section [4]	7
5.Reliability Test	See Section [5]	7
6.Packing and Marking	See Section [6]	8
7.Others		
7-1.Test conditions	See Section [7]	8
7-2.Warranty	See Section [7]	8
7-3.MTTF	See Section [7]	8
7-4.Others	See Section [7]	8

No.	MATERIALS NAME	QU	MATERIAL	REMARK
PRODUCT NAME or MODEL,TITLE				
DC-AC INVERTER CXA-0315				
NAME OF DRAWING		DRAWING No.		PAGE
PRODUCT DRAWING		CTR-0924-F		2

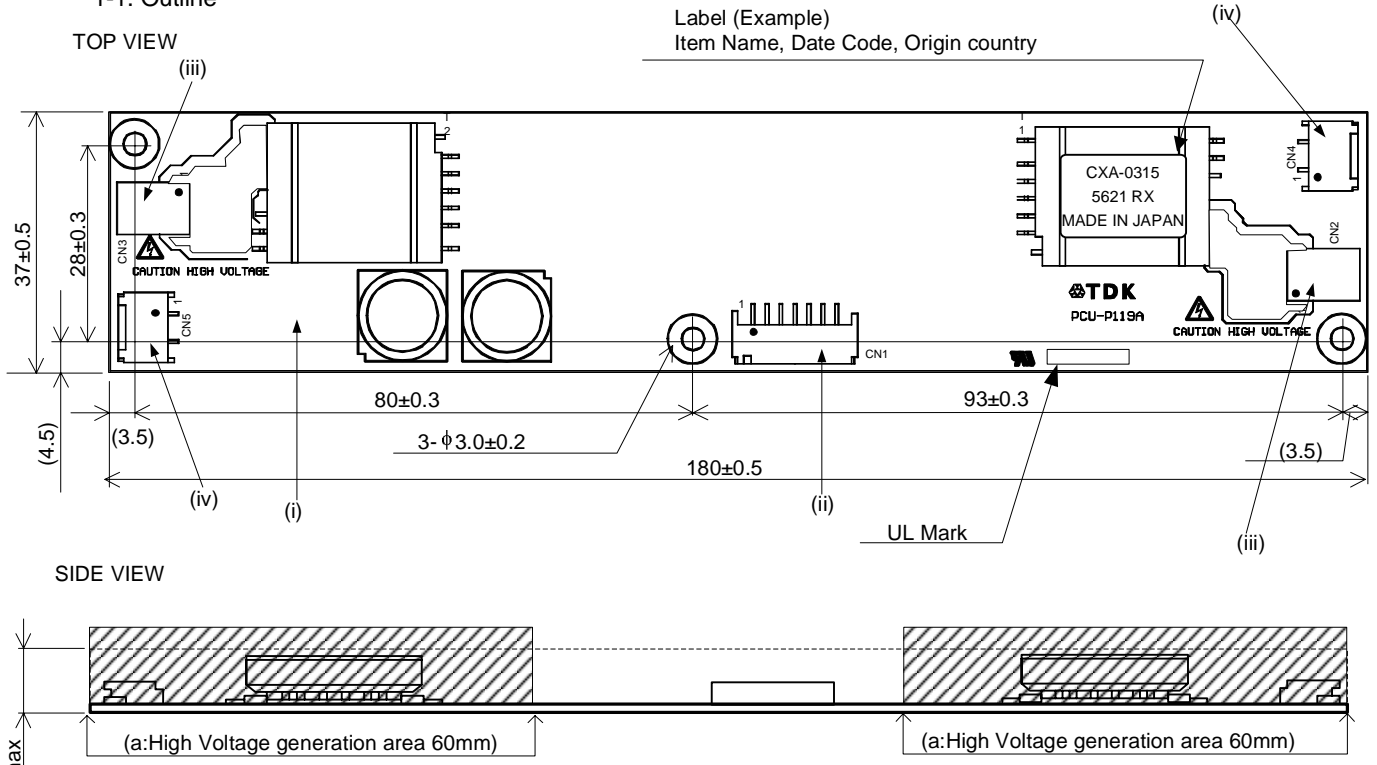
Listed description are subject to change without notice.

Features

- This inverter is for four lamps. It has Dimming function and Remote function.
- This product has shutdown function.
It shows an abnormal condition when the lamps open.
- The high-voltage area (terminals and patterns) is coated with silicone so as to avoid the defects caused by dust.
- This product is conformity to RoHS directive. ()
- () Conformity to RoHS Directive: This means that, in conformity with EU Directive 2002/95/EC, lead, cadmium, hexavalent chromium, and specific bromine-based flame retardants, PBB and PBDE, have not been used, except for exempted applications.

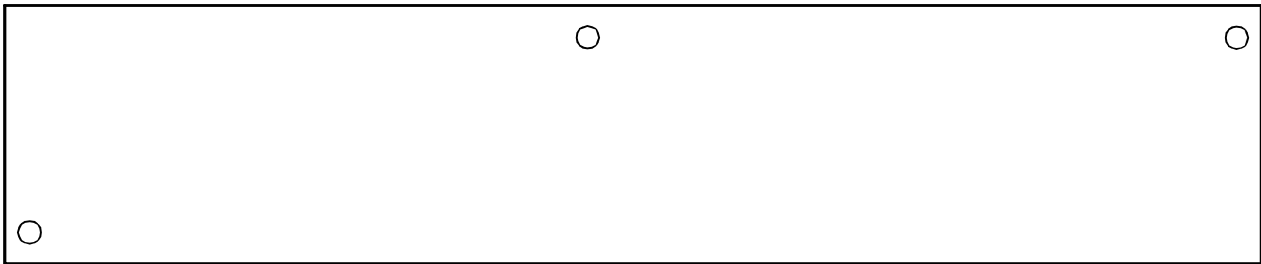
[1] Outline

1-1. Outline



Please secure 3mm or longer space distance from the high voltage generating area in all directions. Please see Note 1-3 for the details.

BOTTOM VIEW



Unit:mm
Weight:44.0g.typ.

No.	Part Description	Material	QU	REMARK	MATES WITH
(i)	PCB	Composite (CEM-3)	1	UL94V-0 t=1.0	-
(ii)	Input Connector CN1	S7B-PH-SM4-TB(LF)(SN)	1	JST	PHR-7
(iii)	Output Connector CN2,CN3	SM02B-BHSS-1-TB(LF)(SN)	2	JST	BHSR-02VS-1
(iv)	Output Connector CN4,CN5	SM02(4.0)B-BHS-1-TB(LF)(SN)	2	JST	BHR-02VS-1

No.	MATERIALS NAME	QU	MATERIAL	REMARK
PRODUCT NAME or MODEL, TITLE				
DC-AC INVERTER CXA-0315				
NAME OF DRAWING		DRAWING No.		PAGE
PRODUCT DRAWING		CTR-0924-F		3

TDK CORPORATION

1-2. Connection Configuration

Input side CN1

Pin No.	Symbol	Rating	Notes
CN1-1	Vin	10.8-13.2V	Input Voltage
CN1-2			
CN1-3	GND	0V	GND
CN1-4			
CN1-5	Vbr	0-5V	Brightness Control
CN1-6	NC	-	
CN1-7	Vrmt	0V/2.5V-Vin	Remote Input Voltage

Output side CN2

Pin No.	Symbol	Rating	Notes
CN2-1	VHIGH1	700Vrms	Output1
CN2-2	VHIGH2	700Vrms	Output2

Output side CN3

Pin No.	Symbol	Rating	Notes
CN3-1	VHIGH3	700Vrms	Output3
CN3-2	VHIGH4	700Vrms	Output4

Output side CN4

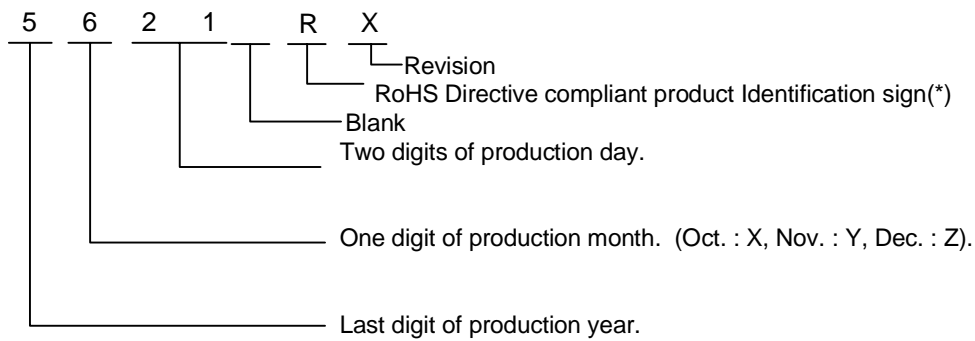
Pin No.	Symbol	Rating	Notes
CN4-1	VLOW1	(2V)	Output1 Return
CN4-2	VLOW2	(2V)	Output2 Return

Output side CN5

Pin No.	Symbol	Rating	Notes
CN5-1	VLOW3	(2V)	Output3 Return
CN5-2	VLOW4	(2V)	Output4 Return

Note1-1. Marking of TDK part No, Date code, Country of origin.

- 1) TDK part No., Date code, Country of origin, is marked on the transformer.
- 2) Date code example. (ex. JUN. 21. 2005)



- 3) Country of origin code example. (ex. MADE IN JAPAN. MADE IN CHINA).

* : Conformity to RoHS Directive: This means that, in conformity with EU Directive 2002/95/EC, lead, cadmium, hexavalent chromium, and specific bromine-based flame retardants, PBB and PBDE, have not been used, except for exempted applications.

No.	MATERIALS NAME	QU	MATERIAL	REMARK
PRODUCT NAME or MODEL, TITLE				
DC-AC INVERTER CXA-0315				
NAME OF DRAWING		DRAWING No.		PAGE
PRODUCT DRAWING		CTR-0924-F		4

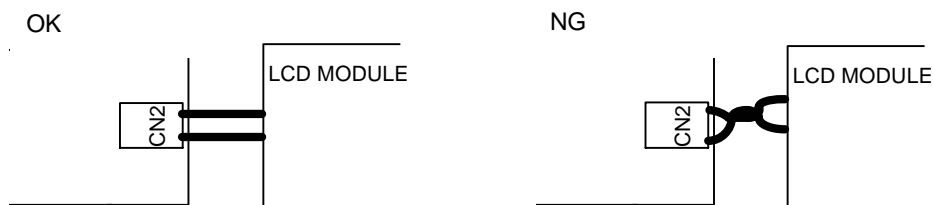
Note1-2. For circuit connection, please prefer to test circuit diagram [3].

Note1-3. Please use minimum of 3mm clearance (all directions) between inverter high voltage area and any conductors. Please refer to mechanical drawing for marking of high voltage area.

Note1-4. Open voltage (strike voltage) is measured across the transformer secondary winding at no load as the reading at the output connector would be less than the actual value.

Note1-5. If the start up voltage falls below Cold Cathode Tube strike voltage, the CCFL will not light up easily specially at lower ambient temperature. Please review mounting instruction to avoid any abnormal operation due to coupling/leakage capacitance of inverter high voltage area to any surrounding conductor.

fig1.High Voltage Code



Note1-6. Please check your lamp characteristic for minimum operational current and set the limit point in your design to avoid flickering and/or abnormal operation.

Note1-7. For proper operation of circuit protection (fuse or IC PROTECTOR), Please use minimum of 5A capacity for input power supply.

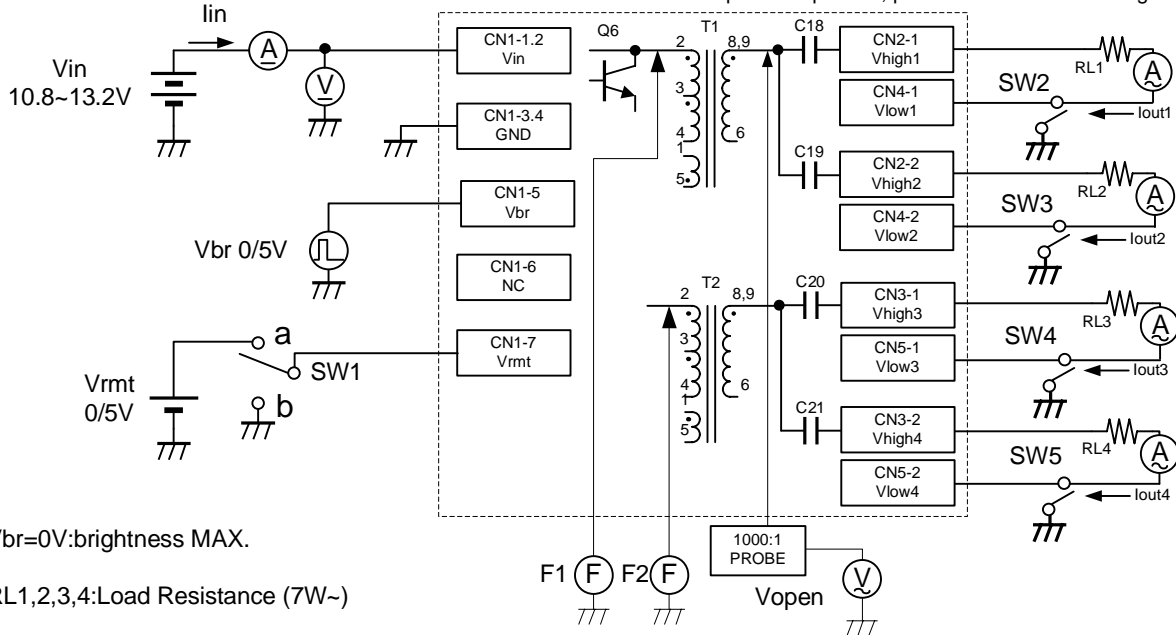
[2]Absolute maximum ratings

Item	Symbol	Specification	Unit	Notes
Input Voltage	Vin	0~14.4	V	
	Vrmt	0~Vin		
	Vbr	0~5.5		
Load Resistance	RL1,RL2 RL3,RL4	100	kΩ	
Operating Temp. range	Ta	0~60	°C	
Storage Temp. range	Ts	-30~85	°C	
Humidity range	RH	95	%RH	A maximum wet ball temperature is 38°C No dew.

No.	MATERIALS NAME	QU	MATERIAL	REMARK
PRODUCT NAME or MODEL, TITLE				
DC-AC INVERTER CXA-0315				
NAME OF DRAWING			DRAWING No.	
PRODUCT DRAWING			CTR-0924-F	
PAGE			5	

[3]Test circuit

*For the number of the component's position, please refer to Outline diagram [1].



Vbr=0V:brightness MAX.

RL1,2,3,4:Load Resistance (7W~)

Note3-1. SW1(ON/OFF) Operation is as following

SW1	Operation of unit
a	Operation
b	Non operation
Open	Non operation

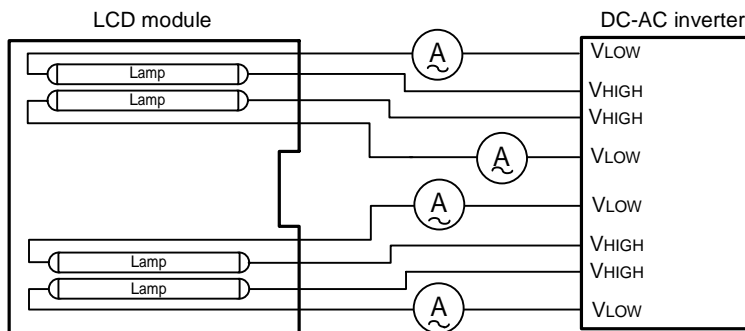
Note3-2.Safety Function

Load Condition	Shutdown Operation
Normal Operation	Normal
1 Lamp Open	Shutdown
2 Lamps Open	Shutdown
3 Lamps Open	Shutdown
4 Lamps Open	Shutdown

Note3-3.Test Equipments

- (V) Digital Multiple Meter(ADVANTEST R6452A or equivalent)
- (A) DC Current Meter(ADVANTEST R6452A or equivalent)
- (F) Frequency Countor(ADVANTEST R6452A or equivalent)
- (V) True RMS Meter(NF Circuit M2170or equivalent)
- (A) High Frequency Current Meter(FLUKE187or equivalent)
- 1000:1 High Voltage Probe(Tektronix P6015A or equivalent)

Connection diagram of LCD module (Reference)

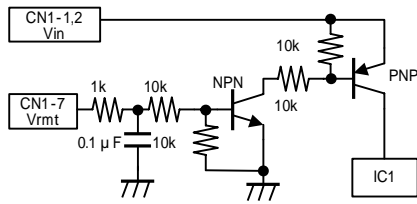


*Connect the High Frequency Current Meter to the Low-Voltage (VLow) side.

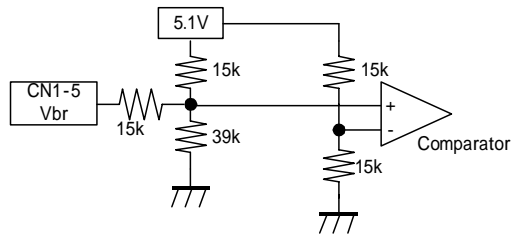
No.	MATERIALS NAME	QU	MATERIAL	REMARK
PRODUCT NAME or MODEL,TITLE				
DC-AC INVERTER CXA-0315				
NAME OF DRAWING		DRAWING No.		PAGE
PRODUCT DRAWING		CTR-0924-F		6

TDK CORPORATION

Remote terminal circuit(Reference)



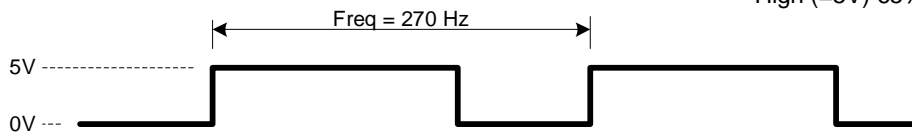
Vbr terminal circuit(Reference)



[4]Electrical specifications

Item	Symbol	Condition					Specifications			Unit
		Vin(V)	Vrmt(V)	Vbr	Ta()	RL(k)	MIN.	TYP.	MAX.	
Output Current (Brightness max.)	Io1,Io2, Io3,Io4	12±1.2	5±0.25	0V	0~60	80	6.5	7.5	8.5	mArms
		12±1.2	5±0.25	0V	23±5	80	7.0	7.5	8.0	
Output Current (Brightness min.)	Io1,Io2	12±1.2	5±0.25	**Duty(High) 65%	0~60	80	3.0	4.0	5.0	
Input Current1	Iin1	12±1.2	5±0.25	0V	0~60	80	-	2.0	2.5	A
Input Current2	Iin2	12±1.2	0	0V	0~60	80	-	-	1.0	mA
Frequency	F1/F2	12±1.2	5±0.25	0V	0~60	80	40	45	50	kHz
Open Circuit Voltage	Vopen 1/2	12 ± 1.2	5 ± 0.25	0V	0 ~ 60	∞	1700	1800	-	Vrms

** High (=5V) 65% , Low (=0V) 35%



[5]Reliability test

Following test items are assured.

Items	Conditions	Judgement
Low Temp.Non operational	-30°C 500h	Electrical and appearance should be in the specifications.
Low Temp.operational	0°C 500h Load Cond.: TYP.	
High Temp.Non operational	85°C 500h	
High Temp.operational	60°C 500h Load Cond.: TYP.	
Heat Shock	-20°C to 75°C 30min. Each 100 Cycles	
Humidity (Non operational)	40°C 90~95%RH 500h	
Humidity operational	40°C 90~95%RH 500h Load Cond.: TYP.	
Vibration	10~57Hz Amplitude 0.75mm 58~500Hz 9.8m/s ² Sweep :11min 60min each axis X,Y,Z	
Shock	980m/s ² 11ms Half-Sine Pulse 1 times each axis ±X,Y,Z	

No.	MATERIALS NAME	QU	MATERIAL	REMARK
PRODUCT NAME or MODEL,TITLE				
DC-AC INVERTER CXA-0315				
NAME OF DRAWING			DRAWING No.	PAGE
PRODUCT DRAWING			CTR-0924-F	7

[6]Packing and Marking

A shipping box is packaged to avoid from water or damage. Following items are printed on the box.

6-1. TDK part No. CXA-0315

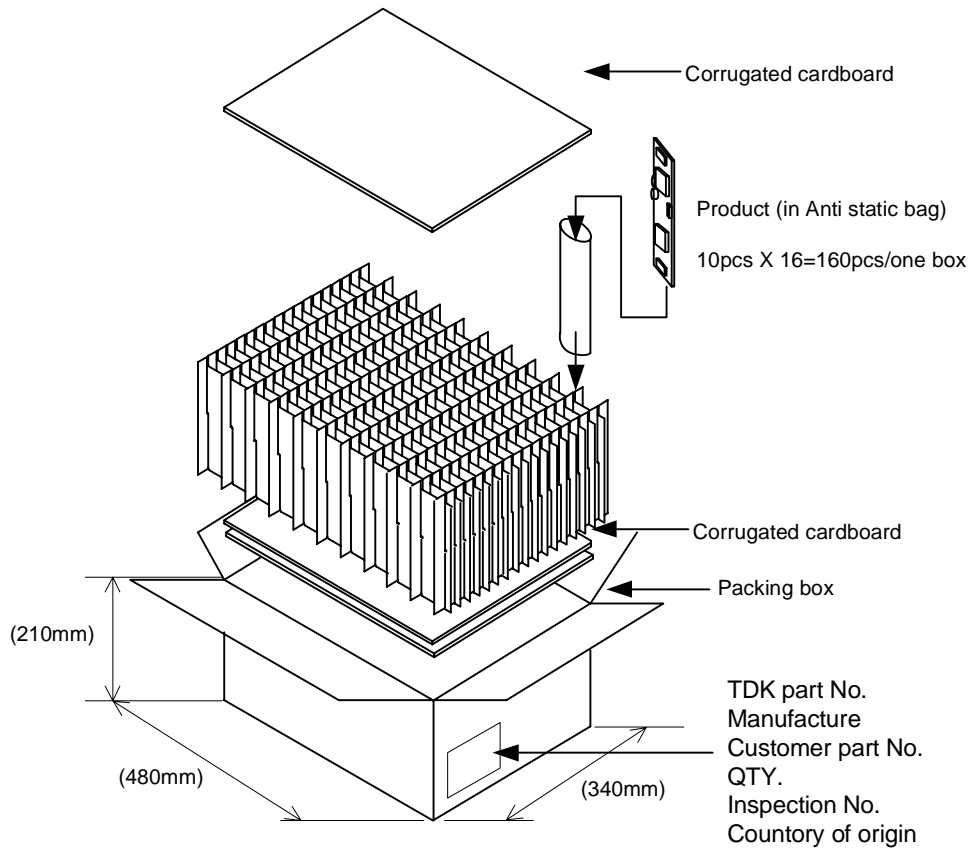
6-2. Manufacture TDK

6-3. Customer part No.

6-4. QTY.

6-5. Inspection No.

6-6. Country of origin Packing style as under Fig. (160 going in with a standard.)



[7]Others

7-1. Test cond.

A normal test condition :Temperature (20±15°C), Humidity (65±20%RH).

7-2. Std warantrny

One year after shipment. This covers any defects in material or workmanship. Defective units will be replaces at no charge.

7-3. MTTF

MTTF which calculated according to MIL-HDBK-217-F is as follows.

TEMPERATURES 25
MTTF 1060000 hours or more

7-4. Others

TDK and customer are to discuss changes, problems, and modifications and etc, when needed.

No.	MATERIALS NAME	QU	MATERIAL	REMARK
PRODUCT NAME or MODEL, TITLE				
DC-AC INVERTER CXA-0315				
NAME OF DRAWING		DRAWING No.		PAGE
PRODUCT DRAWING		CTR-0924-F		8

TDK CORPORATION